



MINDRAY

BC-2800 Auto Hematology Analyzer



Le fabricant et nous même, nous réservons le droit de modifier les produits en vue d'une amélioration

Socimed Sarl, Z.A.C du BOIS MOUSSAY; 10 Avenue du colonel ROL-TANGUY 93240 STAINS France,

Tel. +33(0)148603663 / +33(0)952003663 / +33(0)678621481 Fax. +33(0)148612663

RCS BOBIGNY 481 441 939 - SIRET: 481 441 939 0024 - APE 514N



BC-2800 **Auto Hematology Analyzer**

- Fully automated, compact, flexible and cost effective
- 3-part differentiation of WBC, 19 parameters + 3 histograms
- Throughput: 30 samples per hour
- Up to 10000 sample results (including histograms) can be stored
- Cyanide free HGB analysis method
- 3 counting modes: All parameters, WBC/HGB, RBC/PLT
- Built-in thermal recorder, optional external printer
- Large Color LCD display

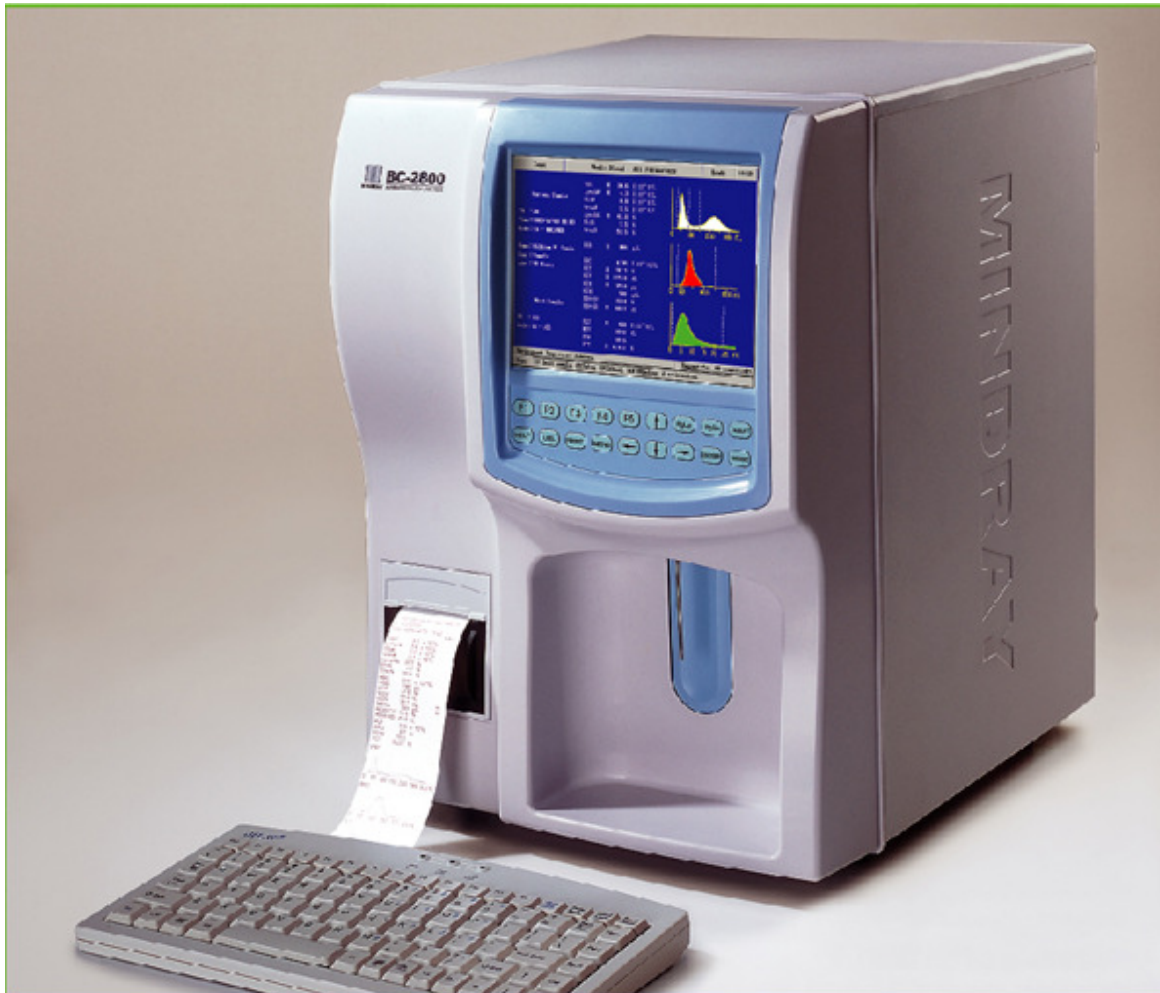


Le fabricant et nous même, nous réservons le droit de modifier les produits en vue d'une amélioration

Socimed Sarl, Z.A.C du BOIS MOUSSAY; 10 Avenue du colonel ROL-TANGUY 93240 STAINS France,

Tel. +33(0)148603663 / +33(0)952003663 / +33(0)678621481 Fax. +33(0)148612663

RCS BOBIGNY 481 441 939 – SIRET: 481 441 939 00024 – APE 514N



Le fabricant et nous même, nous réservons le droit de modifier les produits en vue d'une amélioration

Socimed Sarl, Z.A.C du BOIS MOUSSAY; 10 Avenue du colonel ROL-TANGUY 93240 STAINS France,

Tel. +33(0)148603663 / +33(0)952003663 / +33(0)678621481 Fax. +33(0)148612663

RCS BOBIGNY 481 441 939 – SIRET: 481 441 939 0024 – APE 514N



Ideal for small laboratories

- High performance to price ratio
- High accuracy and reliability
- Throughput of 30 tests per hour fits small laboratory needs
- Compact size to save space
- Microvolume of sample and reagents, automatically maintenance all add up to economy

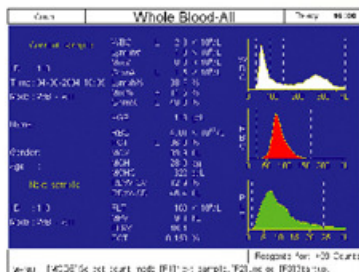


Le fabricant et nous même, nous réservons le droit de modifier les produits en vue d'une amélioration

Socimed Sarl, Z.A.C du BOIS MOUSSAY; 10 Avenue du colonel ROL-TANGUY 93240 STAINS France,

Tel. +33(0)148603663 / +33(0)952003663 / +33(0)678621481 Fax. +33(0)148612663

RCS BOBIGNY 481 441 939 – SIRET: 481 441 939 0024 – APE 514N



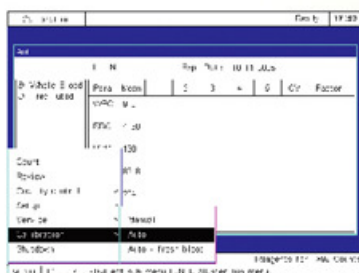
- Large Color LCD display, 19 parameters and 3 histograms in one screen



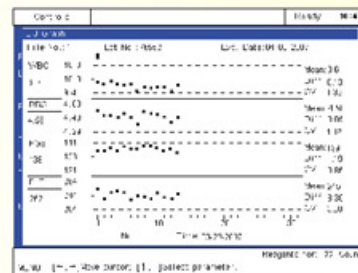
- Comprehensive patient data search function



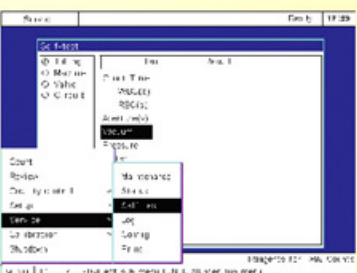
- Programmable multi-format printout; huge storage of 10,000 patient results with histograms
- Multiple access for data input via keypad, keyboard or barcode scanner(optional)



- Fully automatic calibration including unique fresh-blood calibration program



- Comprehensive QC programs including L-J and X-B analyses; Up to 9 controls files - 31 runs/file



- Zap aperture and flush function effectively avoid clog
- Automatic internal and external probe cleaning
- Automatic daily maintenance including background testing



Le fabricant et nous même, nous réservons le droit de modifier les produits en vue d'une amélioration

Socimed Sarl, Z.A.C du BOIS MOUSSAY; 10 Avenue du colonel ROL-TANGUY 93240 STAINS France,

Tel. +33(0)148603663 / +33(0)952003663 / +33(0)678621481 Fax. +33(0)148612663

RCS BOBIGNY 481 441 939 - SIRET: 481 441 939 0024 - APE 514N



BC-2800

Auto Hematology Analyzer

Technical Specifications

Parameters

WBC, Lymph#, Mid#, Gran#, Lymph%, Mid%, Gran%, RBC, HGB, HCT, MCV, MCH, MCHC, RDW-CV, RDW-SD, PLT, MPV, PDW, PCT and Histogram for WBC, RBC, PLT

Principles

Electrical impedance method for counting and SFT method for hemoglobin

Performance

Parameter	Linearity Range	Precision(CV%)
WBC($10^9/L$)	0.0-99.9	3(4.0-15.0)
RBC($10^{12}/L$)	0.2-9.99	2(3.00-6.50)
HGB(g/L)	0-300	2(100 - 180)
MCV(fL)		1(70.0 - 100.0)
PLT($10^9/L$)	0-999	5(200 - 500)

Sample Volume

Prediluted	20 μ l
Whole Blood	13 μ l

Aperture Diameter

80 μ m

Throughput

30 samples per hour

Display

Color LCD display
Resolution: 640x480

Carryover

WBC, RBC,HGB \leq 0.5% , PLT \leq 1%

Input/Output

RS232x2, 1 parallel printer(optional), 1 bar code scanner(optional), 1 keyboard interface

Printout

Thermal recorder, 50mm width paper, various printout formats, printer optional

Operating Environment

Temperature: 15 $^{\circ}$ C-30 $^{\circ}$ C
Humidity: 30%-85%

Power requirement

100-240V~50/60Hz

Dimension

322(W)x 437(H)x 386(D)

Weight

17.9Kg



Le fabricant et nous même, nous réservons le droit de modifier les produits en vue d'une amélioration

Socimed Sarl, Z.A.C du BOIS MOUSSAY; 10 Avenue du colonel ROL-TANGUY 93240 STAINS France,

Tel. +33(0)148603663 / +33(0)952003663 / +33(0)678621481 Fax. +33(0)148612663

RCS BOBIGNY 481 441 939 – SIRET: 481 441 939 0024 – APE 514N